



PASS SUMMIT 2013

October 15-18, 2013
Charlotte, NC

+ PowerPivot
+ Power View
= Self-service BI Revolution

Jose Chinchilla, President & CEO
Agile Bay, Inc.

Jose Chinchilla

MCITP: Database Administrator, SQL Server 2008

MCITP: Business Intelligence SQL Server 2008

Current Positions:

President, Agile Bay, Inc.

President, Tampa Bay Business Intelligence User Group

Regional Mentor, PASS Greater Southeast

Blog:

<http://www.sqljoe.com>

Twitter:

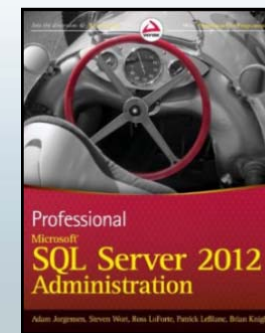
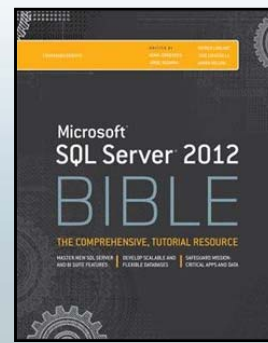
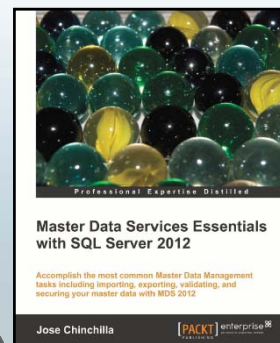
@sqljoe

Linked-in:

<http://www.linkedin.com/in/josechinchilla>

Email:

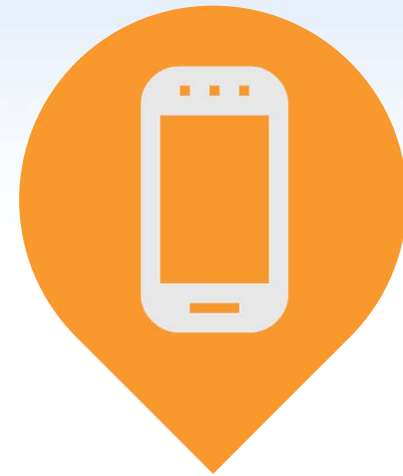
jchinchilla@sqljoe.com



Customers & Partners



Please silence
cell phones



Explore Everything PASS Has to Offer



Free SQL Server and BI Web Events



Free 1-day Training Events



Regional Event



This is Community



Business Analytics Training



Local User Groups Around the World



Session Recordings



CommunityCONNECTOR

PASS Newsletter



Free Online Technical Training

Session Evaluations



Your feedback is important and valuable.

Submit by 5pm Friday Oct. 18 to **WIN** prizes



Go to passsummit/evals



Download the GuideBook App and search: **PASS Summit 2013**



Follow the QR code link displayed on session signage throughout the conference venue and in the program guide

Agenda

- Traditional “Enterprise” BI
 - Lifecycle
 - Challenges
- Self-Service BI
 - Definition
 - Background
 - Justification
- Demo:
 - Analyzing data from multiple sources with PowerPivot
 - Gaining insights from Power View Reports
 - Bonus: PowerMap and PowerQuery
- Q&A

What is Business Intelligence?

“BI results when organizational culture, business processes and technologies are designed and implemented with the goal of improving the strategic and operational decision-making capabilities of internal and external stakeholders.”

- *International Data Corporation (IDC)*

Focus on the keywords!



What is Business Intelligence?

“BI results when organizational **culture**, business **processes** and **technologies** are designed and implemented with the goal of **improving** the strategic and operational **decision-making** capabilities of internal and external **stakeholders**.”

- *International Data Corporation (IDC)*

What is Business Intelligence?

technologies
improving
decision-making
stakeholders

culture

processes

What is Business Intelligence?

Culture, processes and technologies to improve decision making for stakeholders.

Enterprise BI

Traditional BI

October 15-18, 2013 | Charlotte, NC





Sales Order

Order #: S050750

Bill To: Central Discount Store
259826 Russell Rd. South
Kent, Washington 98031
United States

Ship To: Central Discount Store
259826 Russell Rd. South
Kent, Washington 98031
United States

Contact: Jean Handley
Carina Stanev

Purchasing Manager 582-555-0113
Purchasing Agent 597-555-0100

Date: 7/31/2009
Order Date: 6/1/2003

Sales Person: David Campbell, Sales Representative
740-555-0182

Purchase Order: PO7192170677
Shipment Method: CARGO TRANSPORT 5

| Line | Qty | Item Number | Description | Tracking # | Unit Price | Subtotal | Discount | Item Total |
|------|-----|-------------|----------------------------|--------------|------------|------------|---------------|-------------------|
| 1 | 2 | CA-1098 | AWC Logo Cap | 373D-417C-AE | \$5.19 | \$10.37 | \$0.00 | \$10.37 |
| 2 | 4 | GL-F110-M | Full-Finger Gloves, M | 373D-417C-AE | \$22.79 | \$91.18 | \$0.00 | \$91.18 |
| 3 | 4 | LJ-0192-L | Long-Sleeve Logo Jersey, L | 373D-417C-AE | \$28.84 | \$115.36 | \$0.00 | \$115.36 |
| 4 | 3 | GL-F110-L | Full-Finger Gloves, L | 373D-417C-AE | \$22.79 | \$68.38 | \$0.00 | \$68.38 |
| 5 | 1 | BK-M68B-42 | Mountain-200 Black, 42 | 373D-417C-AE | \$1,229.46 | \$1,229.46 | \$0.00 | \$1,229.46 |
| 6 | 1 | TG-W091-L | Women's Tights, L | 373D-417C-AE | \$44.99 | \$44.99 | \$0.00 | \$44.99 |
| 7 | 1 | BK-M68S-38 | Mountain-200 Silver, 38 | 373D-417C-AE | \$1,242.85 | \$1,242.85 | \$0.00 | \$1,242.85 |
| | | | | | | | Total: | \$2,802.60 |

Total Discount: \$0.00

Contact us:

- Phone: 800-ADVENTURE
- Email: help@adventureworks.com
- Fax: 800-555-2424

Search this site...

Person Responsible

Store: Colorado
Sales Quota: 11,600,000
Territory Sq. Miles: 3,817
Modified: 9/22/2009 10:03 AM
Comments:

By Territory (Sales Quantity)

Legend: North... (Green), Europe (Red), Asia (Blue)

Traditional BI: Lifecycle



Traditional BI: Time to Data

The Challenge



Traditional BI: Lifecycle

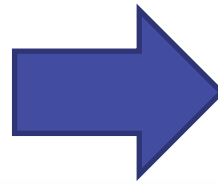
Requirements Gathering, Analysis & Design



Traditional BI: Expectation vs. Perception



Expectation



Perception

Self-service BI

Definition

Self-Service BI: Definition

Enables business users to access and work with corporate information...
...without the IT department's involvement...

WAIT A MINUTE!

Self-Service BI: Definition

Without the IT department's involvement ?

Without the IT department's involvement ?

Without the IT department's involvement ?

You are thinking...



You are thinking...



You are thinking...



Self-Service BI: Definition Caveat

Enables business users to access and work with corporate information...
...without the IT department's involvement...

except, to set up the data warehouse and data marts and deploy the self-service query and reporting tools.



ETL

Modeling

Security

Infrastructure

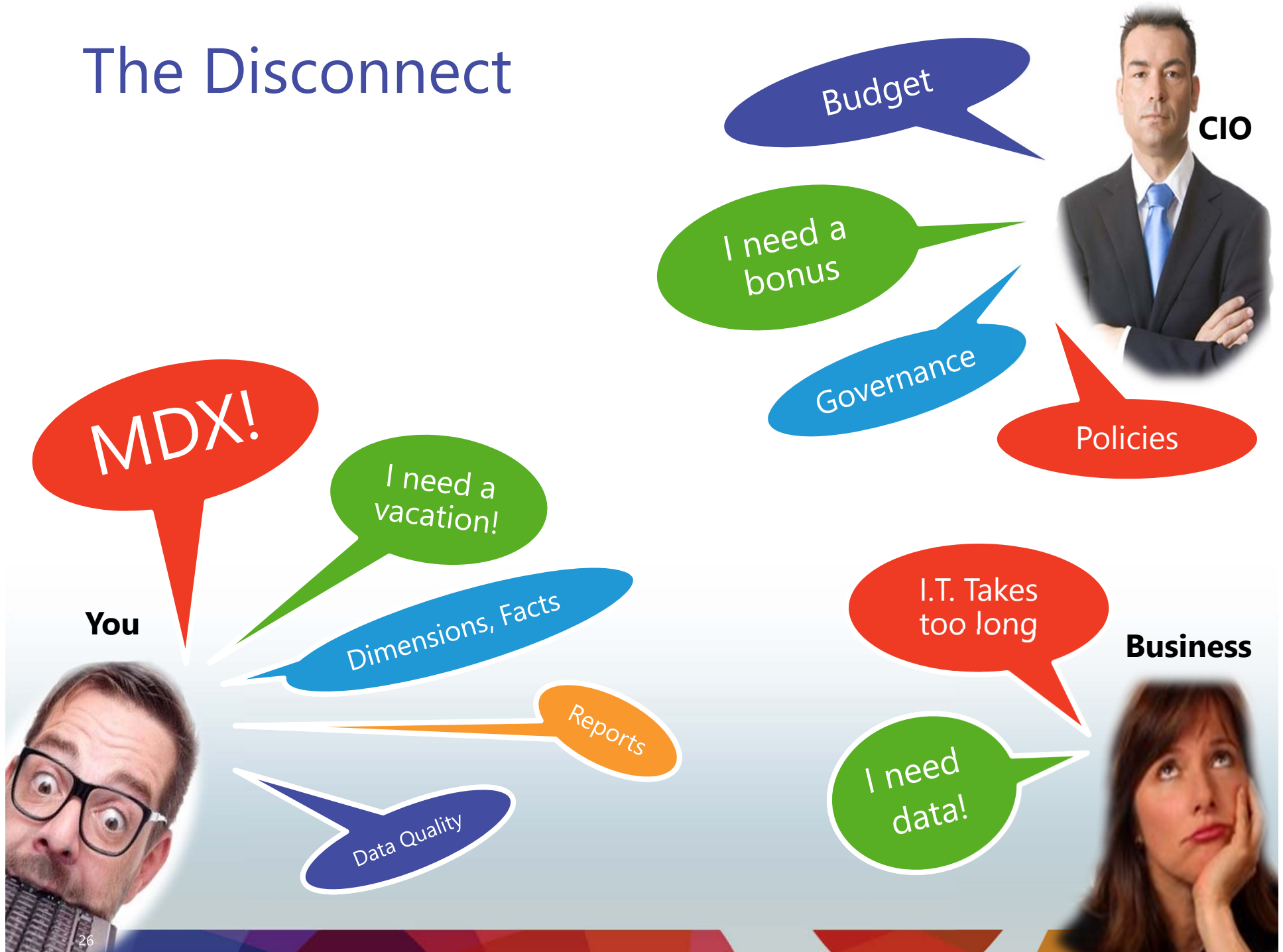
Why Self-Service?

Background

October 15-18, 2013 | Charlotte, NC



The Disconnect



I.T. vs. Business

Can't she understand she needs to open a ticket!

Great! Now I have to open a ticket so that he can fix the report he just broke!



Who's to blame?

I.T. vs. Business

October 15-18, 2013 | Charlotte, NC

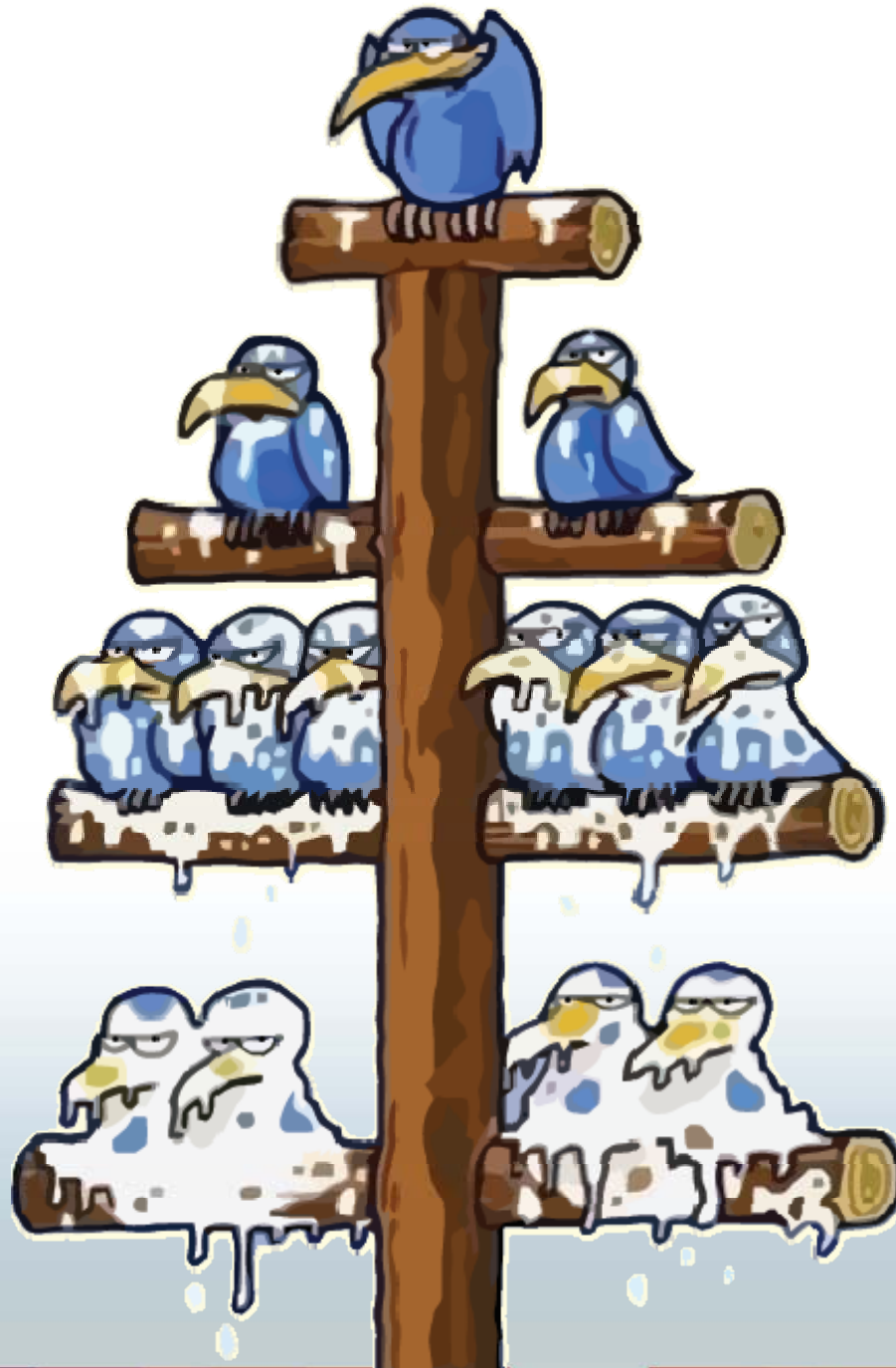


Executives

Analysts

Developers

DBAs



Blame Flow

Self-Service BI

Justification

October 15-18, 2013 | Charlotte, NC



Self-Service BI: Justification

- Quicker analysis of data (relevance & timeliness)
- Better understanding new data
- Business Discovery (Don't know what I don't know)
- More business and market insight
- Turning opportunities into revenue
- More proactive and less reactive
- Increased productivity
- Faster resolution of issues



Self-Service BI: Time to Data

Challenge overcome



Self-Service BI: Justification

- Less reports
- I.T. free to other priorities
- Less friction between I.T. and Business
- Less tickets!



IT & Business



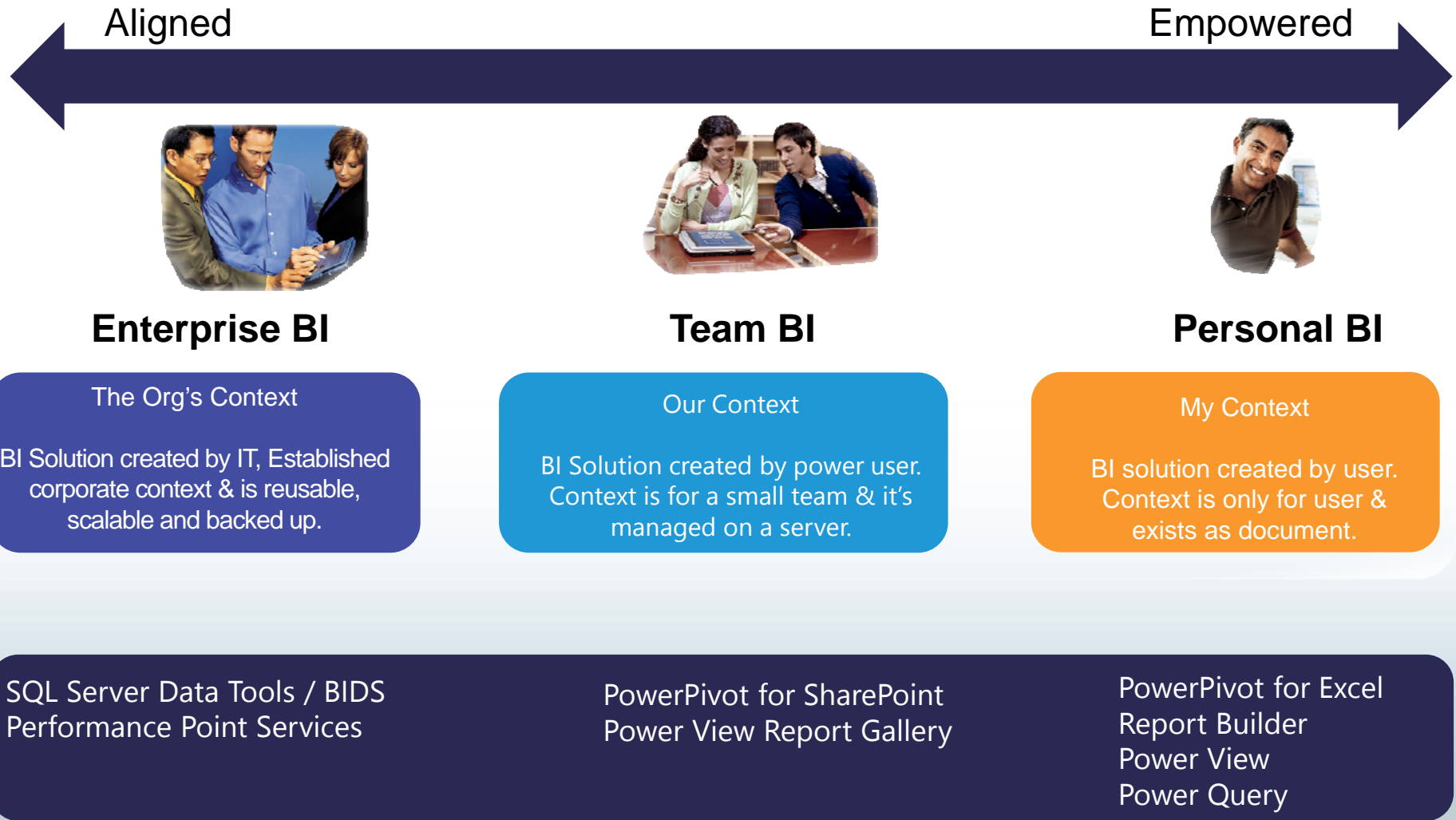
BI for everyone



October 15-18, 2013 | Charlotte, NC



Business Intelligence for everyone



Microsoft toolset

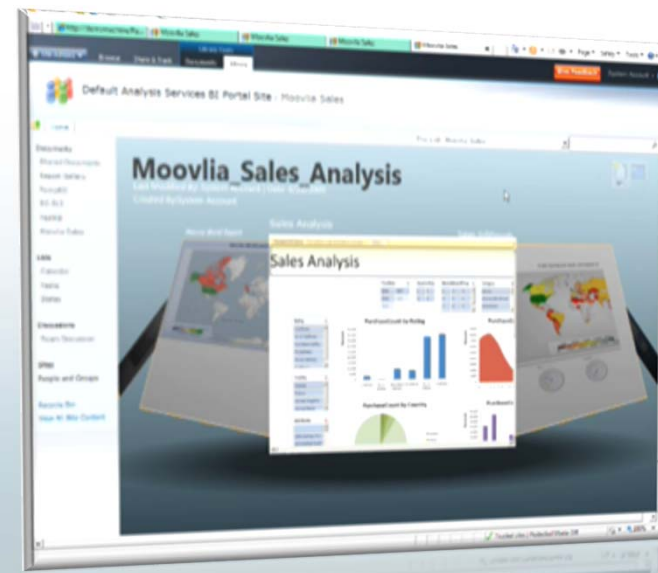
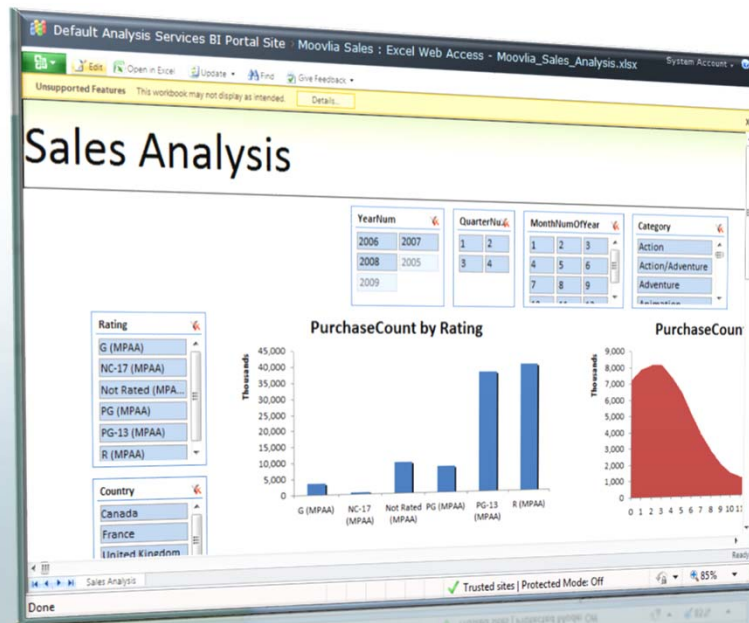
Self-service BI

October 15-18, 2013 | Charlotte, NC



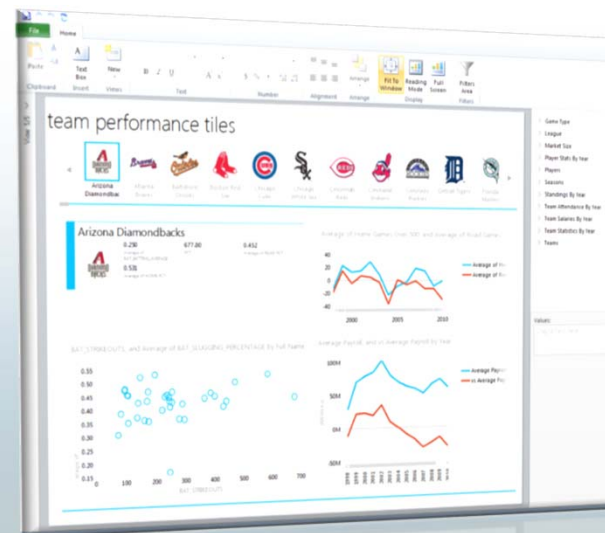
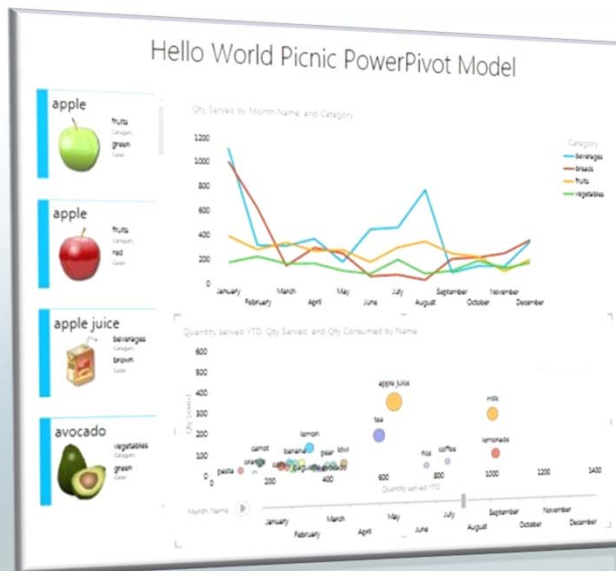
Power Pivot

- PowerPivot Excel Add-in
- PowerPivot for SharePoint
- xVelocity (Vertipaq)
- BISM
- Excel 2013



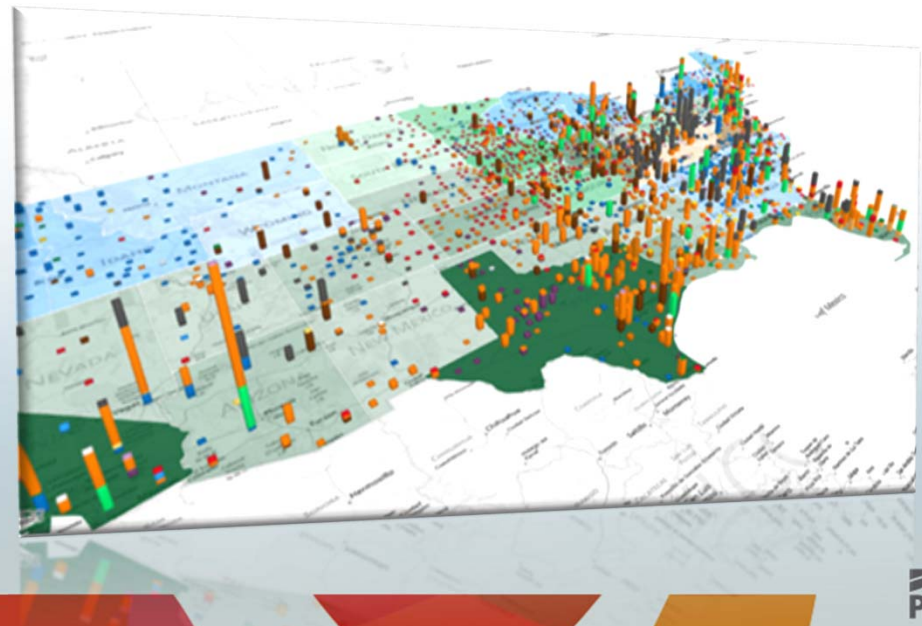
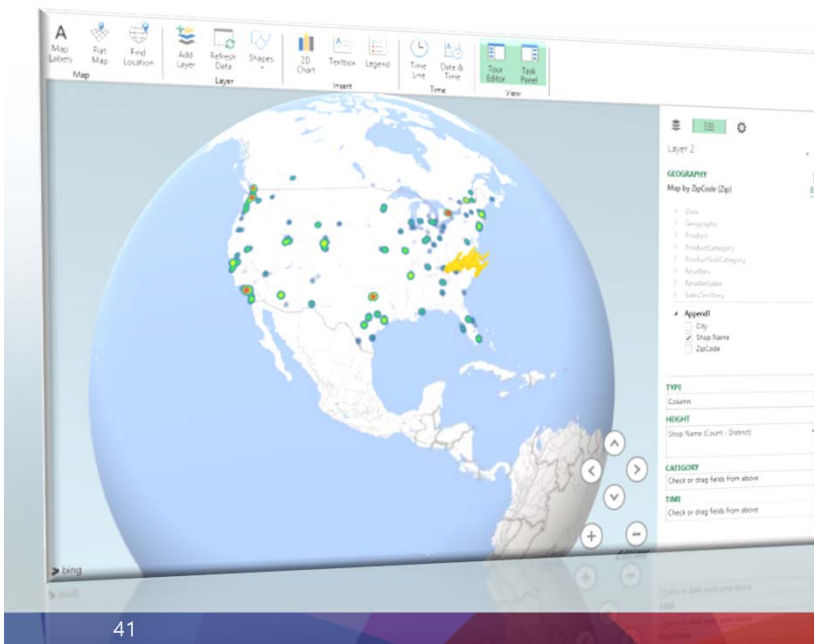
Power View

- Ad-hoc interactive reports
- True point & click
- Export to PowerPoint with interactivity
- SharePoint2010 SP1+ SQL Server 2012 SSRS integration
- Excel 2013



PowerMap

- Interactive 3D mapping
- Bing integration
- Excel 2013



PowerQuery

- Discover and combine data
- Multiple sources including web
- ETL capability
- M script
- Excel 2013

The screenshot displays the PowerQuery interface. The main pane shows a table titled "Top employers - Economy - Raleigh, North Carolina" with the following data:

| # | Employer | # of Employees | Key |
|----|----------------------------------|----------------|-----|
| 1 | State of North Carolina | 24739 | 1 |
| 2 | Wake County Public School System | 17572 | 2 |
| 3 | North Carolina State University | 7730 | 3 |
| 4 | WakeMed | 7607 | 4 |
| 5 | Rex Hospital | 4800 | 5 |
| 6 | Red Hat | 4500 | 6 |
| 7 | Wake County | 4272 | 7 |
| 8 | City of Raleigh | 3811 | 8 |
| 9 | Progress Energy | 2500 | 9 |
| 10 | First Citizens BancShares | 1703 | 10 |
| 11 | Duke Raleigh Hospital | 1700 | 11 |

Below the table, the "Columns [4]" section shows: "#, Employer, # of Employees, Key". The "Last modified" date is "Monday, September 16, 2013". The "From" source is "Wikipedia". The "Data Source" is "http://en.wikipedia.org/wiki/Raleigh,_North_Carolina". At the bottom of the main pane are buttons for "ADD TO WORKSHEET", "FILTER & SHAPE", and "DISCLAIMER".

The "Online Search" pane on the right shows a search for "north carolina" with 433 results. The top results include:

- From Wikipedia on Monday, September 16, 2013: North Carolina - Wikipedia, the free encyclopedia
- W Presidential elections result... From Wikipedia on Monday, September 16, 2013: Politics and government of North Carolina - Wikipedia, the free encyclopedia
- W Top employers - Economy ... From Wikipedia on Monday, September 16, 2013: Raleigh, North Carolina - Wikipedia, the free encyclopedia
- W Historical populations - De... From Wikipedia on Monday, September 16, 2013: Raleigh, North Carolina - Wikipedia, the free encyclopedia
- W Sports - Greensboro, North ... From Wikipedia on Monday, September 16, 2013: Greensboro, North Carolina - Wikipedia, the free encyclopedia
- W Largest employers - Econo... From Wikipedia on Monday, September 16, 2013: Raleigh, North Carolina - Wikipedia, the free encyclopedia

Demo:

- Analyzing data from multiple sources with PowerPivot
- Gaining insights from Power View Reports
- Data discovery with PowerQuery
- Exploring geographical data with PowerMap

Summary

Summary

- Traditional Enterprise BI
 - Longer time to data
 - Disconnect between I.T. and the Business
 - Expected vs. Delivered not always the same
- Self-service BI
 - Reduced time to data
 - More relevant and timely data
 - Business insights and discovery
- Microsoft Self-service BI tools
 - PowerPivot
 - Power View
 - Power Query

Contact Info

October 15-18, 2013 | Charlotte, NC





Jose Chinchilla



jchinchilla@agilebay.com



[@sqljoe](https://twitter.com/sqljoe)



<http://linkedin.com/in/josechinchilla>



<http://www.agilebay.com>



<http://www.sqljoe.com>



<http://amazon.com/author/josechinchilla>

Downloads



Downloads

Slides, Demos & Scripts:

<http://bit.ly/18ckkiD>

Q&A

Session Evaluations

3
ways to access

Your feedback is important and valuable.

Submit by 5pm Friday Oct. 18 to **WIN** prizes



Go to passsummit/evals



Download the GuideBook App and search: **PASS Summit 2013**



Follow the QR code link displayed on session signage throughout the conference venue and in the program guide

Thank you

for attending this session and the
2013 PASS Summit in Charlotte, NC

October 15-18, 2013 | Charlotte, NC



Image sources

1. <http://blogs.msdn.com/b/chrisfie/archive/2011/03/02/great-read-how-to-choose-the-right-business-intelligence-technology-to-suit-your-style-microsoft-bi.aspx>
2. http://clashdaily.wpengine.netdna-cdn.com/wp-content/uploads/2013/04/mean_OLD_teacher_300-1.jpg
3. <http://s477.photobucket.com/user/batkarrett/media/Steves%20Crit/mrbean.png.html>
4. <http://static.neatorama.com/images/2008-11/crowded-train.jpg>
5. http://uncyclopedia.wikia.com/wiki/File:Will_code_html_for_food.jpg
6. http://pickyourfuture.files.wordpress.com/2011/08/funny_homeless_signs_21-490x416.jpg
7. http://komxinternational.com/wp-content/uploads/2010/03/data_center_services.jpg
8. <http://www.precisionintervention.com/successes/david-and-julies-story/>
9. <http://crm.vdsnickt.eu/wp-content/uploads/2013/02/IT-Crowd.jpg>
10. http://photos-c.ak.fbcdn.net/hphotos-ak-ash3/1097957_562671717112560_752591519_n.png